

2405 SOUTH INDUSTRIAL PARK DRIVE TEMPE, ARIZONA



Development of:



INDUSTRIAL PARK CENTER AVAILABLE FOR LEASE

BUILDING FEATURES:

- ◆ Available: 7,276 SF (approx 3,401 SF office)
- ◆ Bldg Size: 7,276 SF
- ◆ Power: 400A 277/480V
- ◆ Clear Height: 14'
- ◆ Parking: 3:1000
- ◆ Loading: (1) Truck-Well
(1) Grade Level Door
- ◆ Zoning: GID
- ◆ YOC: 1987
- ◆ Fully sprinklered, A/C Warehouse

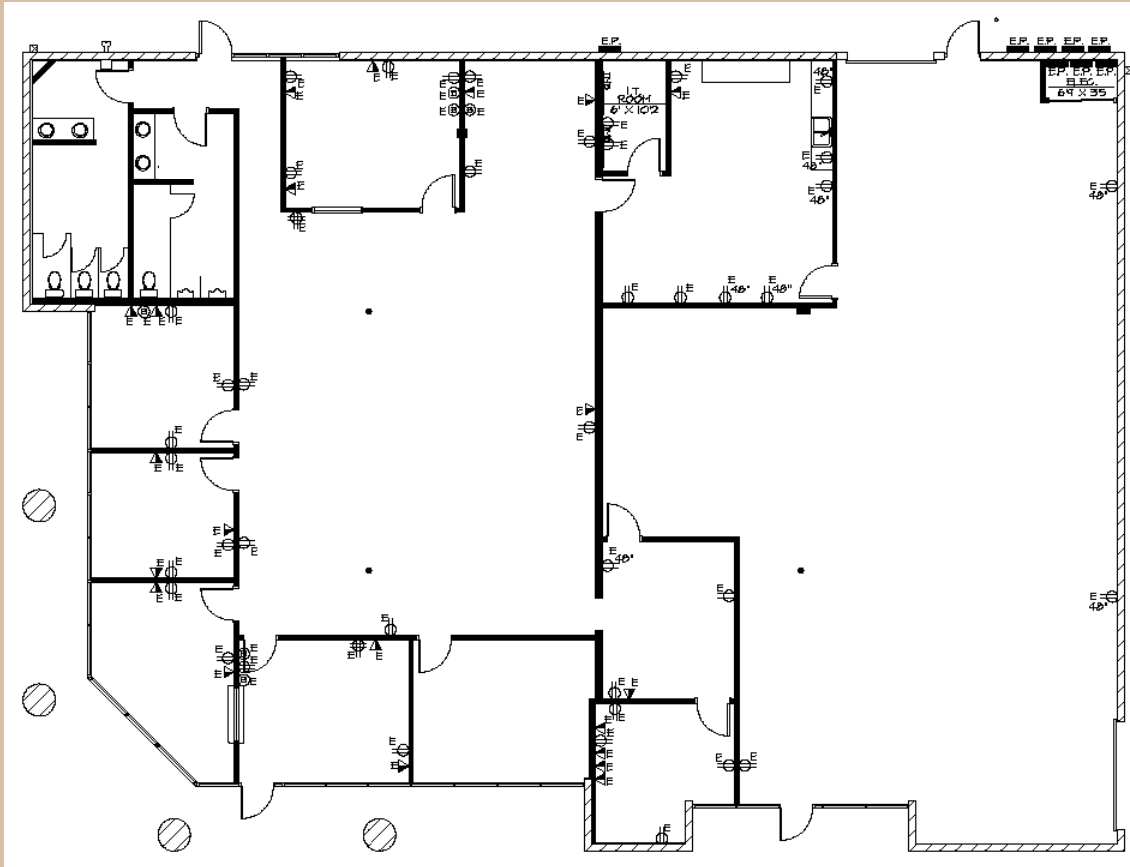
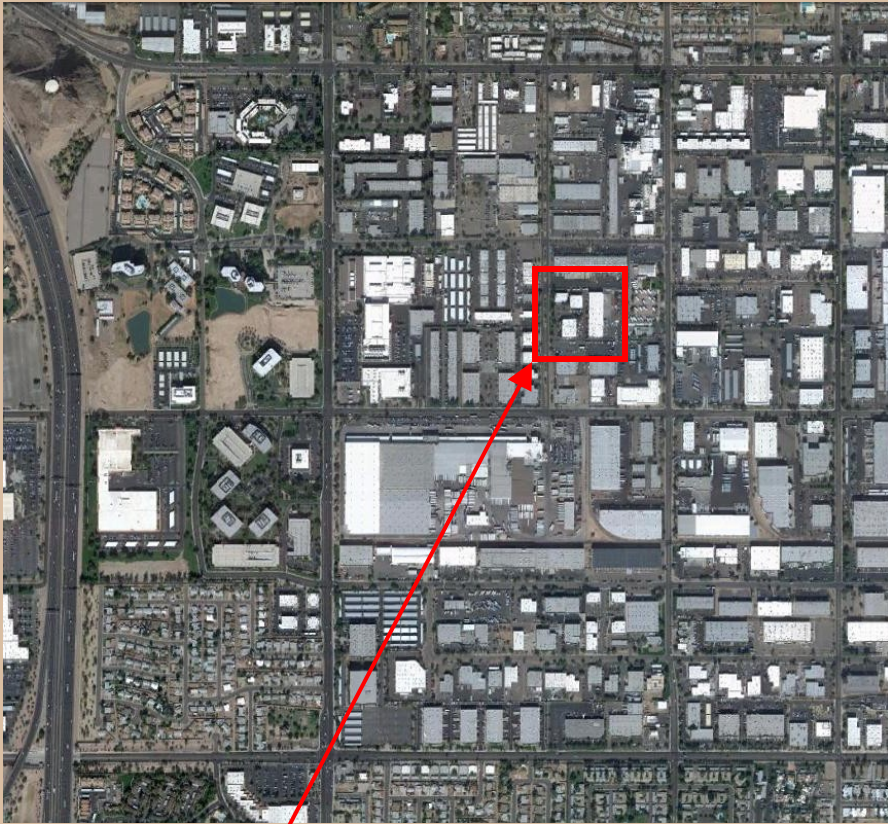
For more information contact:

CURTIS BROWN
480.362.9501
cbrown@rossbrown.com

BOB CRUM
480.362.9521
bcrum@rossbrown.com

RICHARD MACKAY
480.362.9507
rmackay@rossbrown.com

**ROSS
BROWN**



INDUSTRIAL PARK CENTER



SPACE FEATURES:

- ◆ 6 Private Offices
- ◆ Large Conference Room
- ◆ Large Break Room / Kitchen
- ◆ Open Office Area
- ◆ Reception Area

LOCATION FEATURES:

- ◆ Located in the Broadway Industrial Park
- ◆ Close proximity to I-10, SR-143, and US 60
- ◆ 10 Minutes from Sky Harbor Airport

For more information contact:

CURTIS BROWN

480.362.9501

cbrown@rossbrown.com

BOB CRUM

480.362.9521

bcrum@rossbrown.com

**ROSS
BROWN**

The information contained herein has either been given to us by the owner of the property or obtained from sources that we deem reliable. No warranties or representations, expressed or implied, are made as to the accuracy of the information contained herein.

A REAL ESTATE SERVICES COMPANY