

2465 SOUTH INDUSTRIAL PARK DRIVE TEMPE, ARIZONA



Development of:



INDUSTRIAL PARK CENTER AVAILABLE FOR LEASE

BUILDING FEATURES:

- | | | | | | |
|-----------------|------------------------------------|------------|------------------------------|--|------|
| ◆ Available: | 13,768 SF (approx 2,640 SF office) | ◆ Parking: | 2:1000 | ◆ Zoning: | I-2 |
| ◆ Bldg Size: | 38,264 SF | ◆ Loading: | (3) 20' Wide Dock High Doors | ◆ YOC: | 1987 |
| ◆ Power: | 400A 277/480V | | (6) Dock High Positions | ◆ Fully sprinklered, EVAP cooled Warehouse | |
| ◆ Clear Height: | 22'-24" | | | | |

For more information contact:

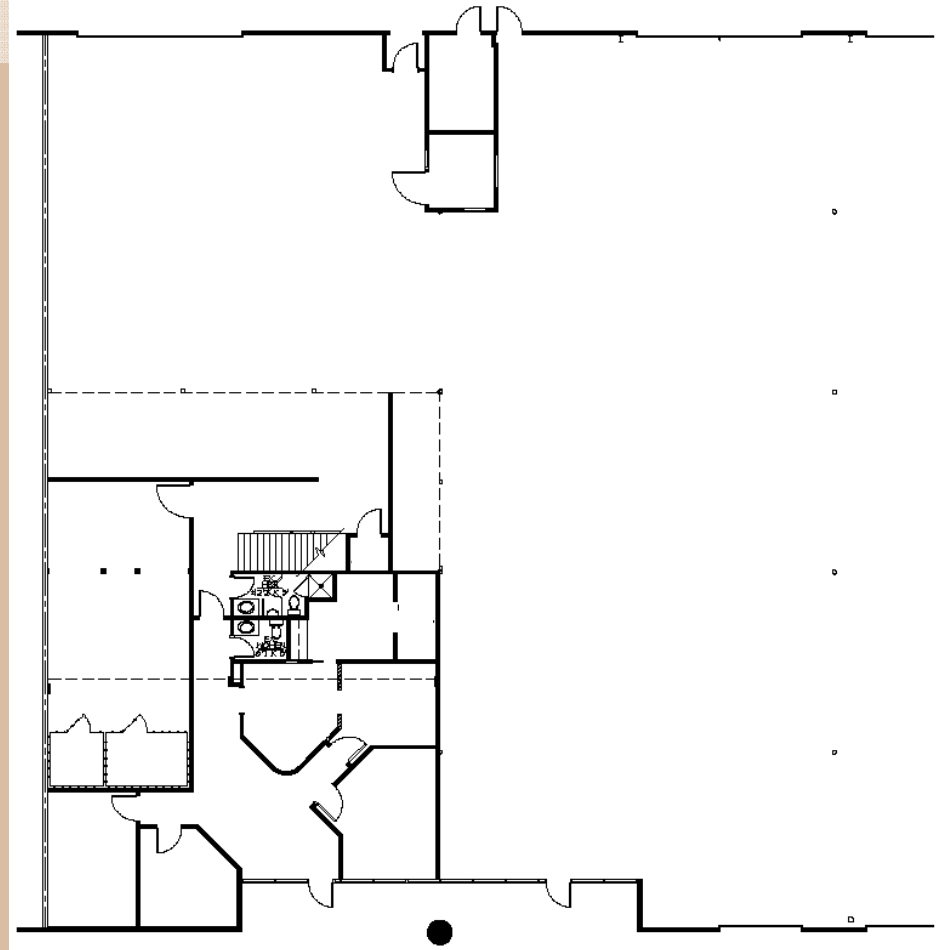
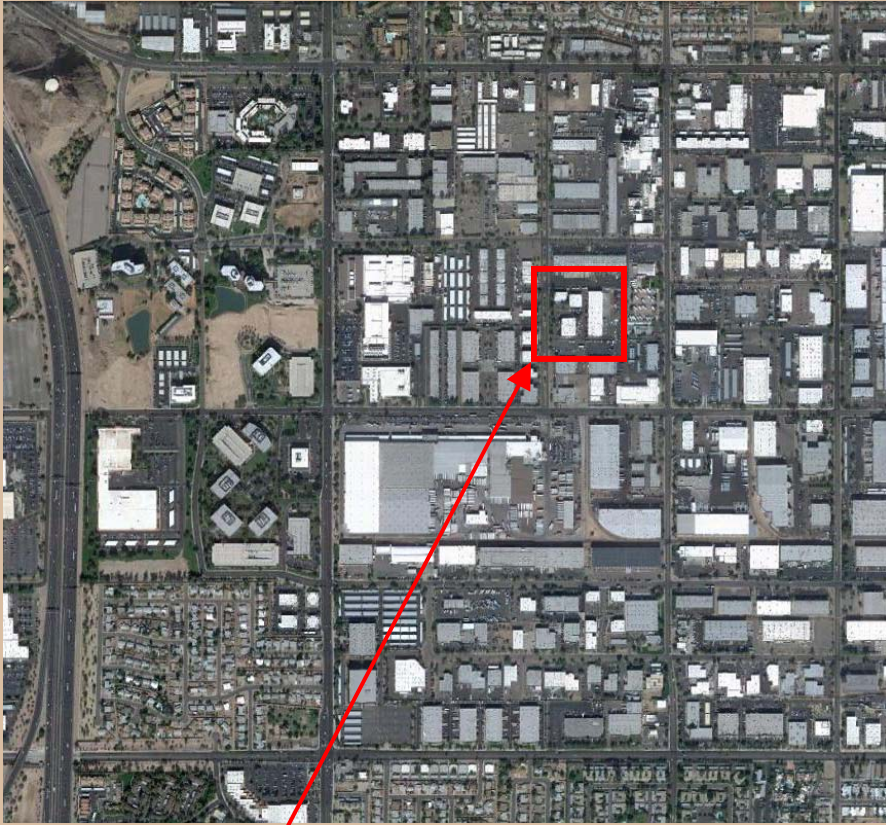
RICK COLLINS
480.362.9503
rcollins@rossbrown.com

CURTIS BROWN
480.362.9501
rbrown@rossbrown.com

JEFF WOUDEBERG
480.362.9509
jeffw@rossbrown.com

**ROSS
BROWN**

2465 SOUTH INDUSTRIAL PARK DRIVE



INDUSTRIAL PARK CENTER



SPACE FEATURES:

- ◆ 3 Private Offices
- ◆ Large Conference Room
- ◆ Break Room / Kitchen / Copy Room
- ◆ Reception Area
- ◆ Great Storage - In Office and Mezzanine

LOCATION FEATURES:

- ◆ Located in the Broadway Industrial Park
- ◆ Close proximity to I-10, SR-143, and US 60
- ◆ 10 Minutes from Sky Harbor Airport

For more information contact:

RICK COLLINS

480.362.9503

rcollins@rossbrown.com

CURTIS BROWN

480.362.9503

cbrown@rossbrown.com

**ROSS
BROWN**

The information contained herein has either been given to us by the owner of the property or obtained from sources that we deem reliable. No warranties or representations, expressed or implied, are made as to the accuracy of the information contained herein.

A REAL ESTATE SERVICES COMPANY