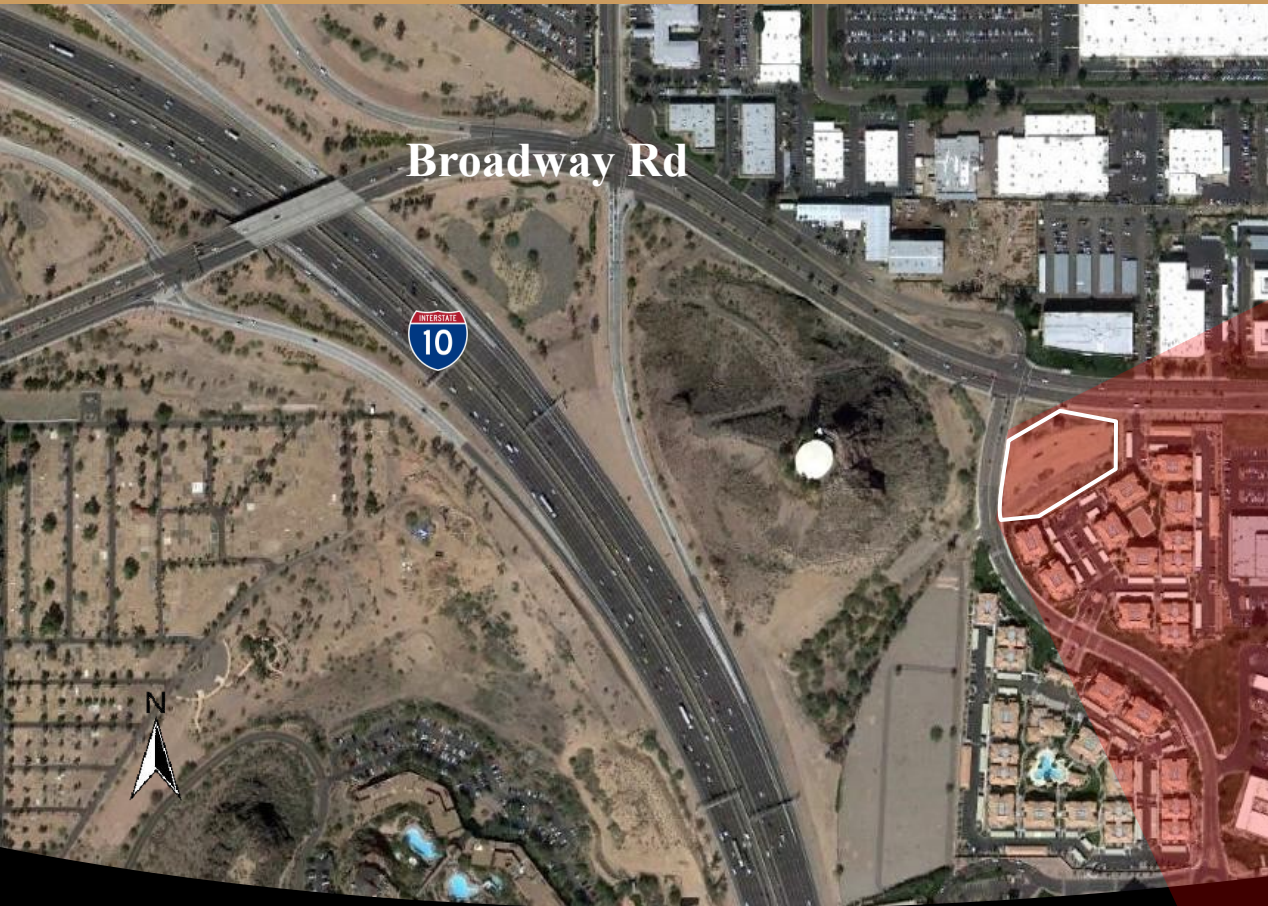


1.73 ACRES - PAD ZONED LAND FOR SALE

MU-4 PAD = Mixed-Use, High Density
Personal & Professional Services, Institutional & Civic Uses, Retail, Multi-Family Dwellings,
Attached Single-Family Dwellings, Mixed-Use Buildings.
Unlimited Housing Density, Commercial, Office & Public Uses

Fountainhead Apartments Lot 2
Tempe, Arizona 85282



Site Features

- Location: Broadway & I-10 Intersection
SEC of Broadway Rd & 55th St (Twin Buttes Cemetery Road)
- Size: +/- 1.73 Acres (75,063 SF)
- Zoning: PAD, City of Tempe
- APN #: 123-33-062
- Excellent Build-to-Suit Location
- 2 blocks to full diamond interchange at Broadway Rd. & I-10

Contact:

CURTIS BROWN
480.362.9501
cbrown@rossbrown.com

A REAL ESTATE SERVICES COMPANY

**ROSS
BROWN**

MU-4 PAD ZONED LOT - FOR SALE
1.73 Acres

Fountainhead Apartments, Lot 2
Tempe, Arizona

Service Providers

- Electric: SRP located in 55th Street
- Water: City of Tempe - 12" water main located in the center of Broadway Road
- Sewer: City of Tempe , sewer line to property.
- Natural Gas: SW Gas - Gas is located in Broadway Road



For more information contact:

CURTIS BROWN
480.362.9501
cbrown@rossbrown.com



The information contained herein has either been given to us by the owner of the property or obtained from sources that we deem reliable. No warranties or representations, expressed or implied, are made as to the accuracy of the information contained herein.

A REAL ESTATE SERVICES COMPANY